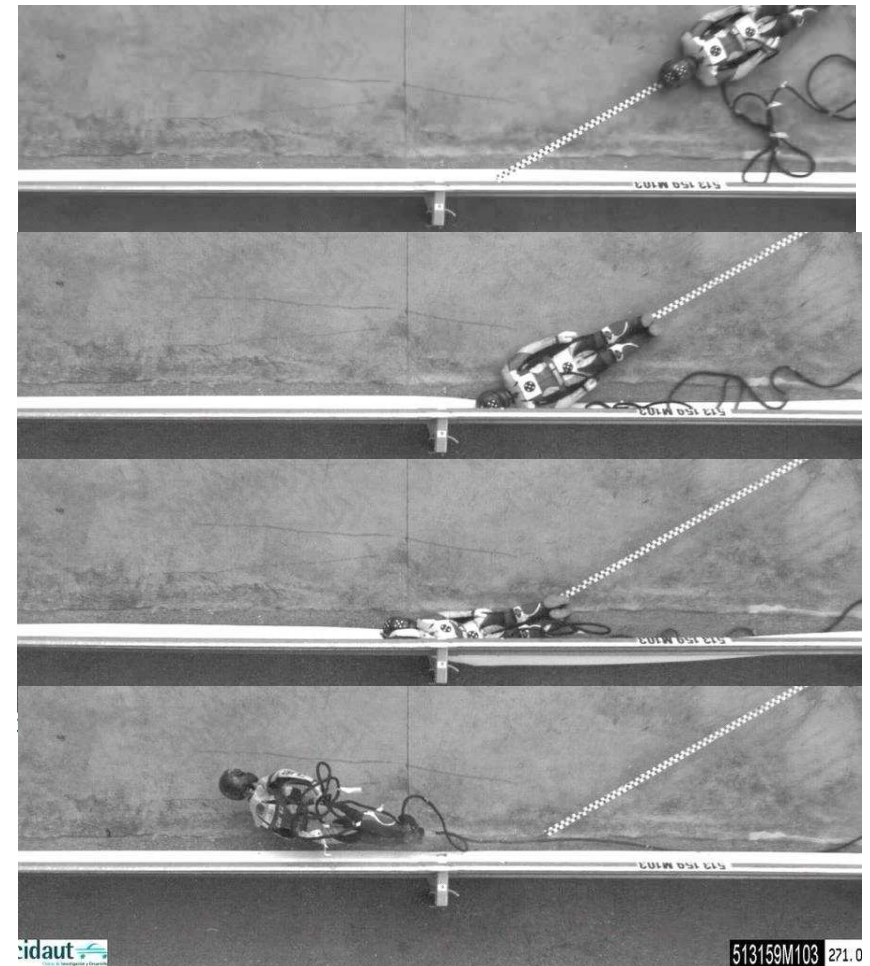


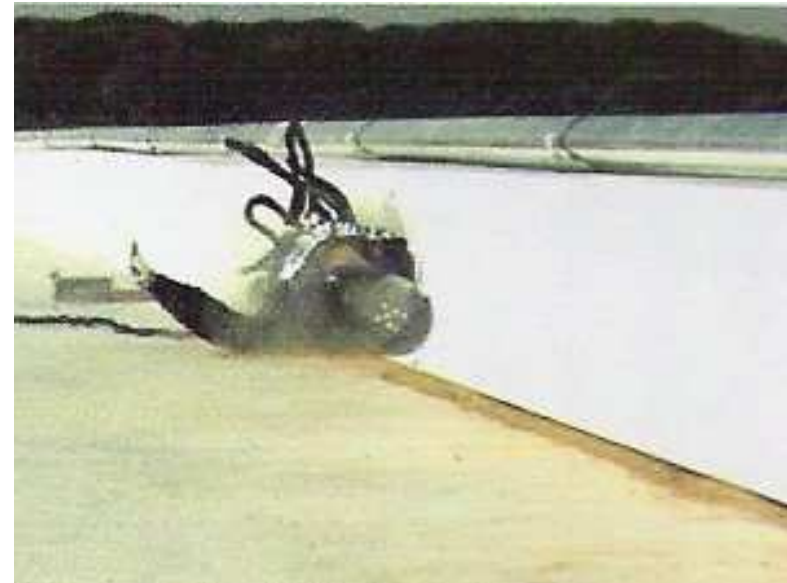


MOTORCYCLISTS PROTECTION SYSTEM



- It's a **continuous** protection system, this avoids:
 - the impact against the post
 - to exceed the protection barrier
- **Non-rigid** impact absorption mechanism
 - based on controlled elasticity
 - the least aggressive with motorcyclists
- The rider is **redirected** in the same direction
 - Due to the elastic geotextile
 - Avoiding the bounce effect
- Valid for **all types** of:
 - barriers (metallic or not)
 - posts (C , tubular ,IPN...)
- The system **contains and redirects** all kinds of vehicles: motorcyclists, cyclists, cars ...





- Drastic **decrease of fatalities** in guardrail crashes
- BasyC **improves the performance** of the barrier
- **Fireproof**, thanks to its superficial anti-friction treatment, that avoids the high temperatures generated with an impact
- **Non-stick**, allows an easy sliding (water, dust, snow ...)
- **No maintenance required.**
- **Easy installation.** It is not necessary to remove the beam
- **Adaptable:** the mesh adapts to the conditions of the route



THERMOPLASTIC WELDING

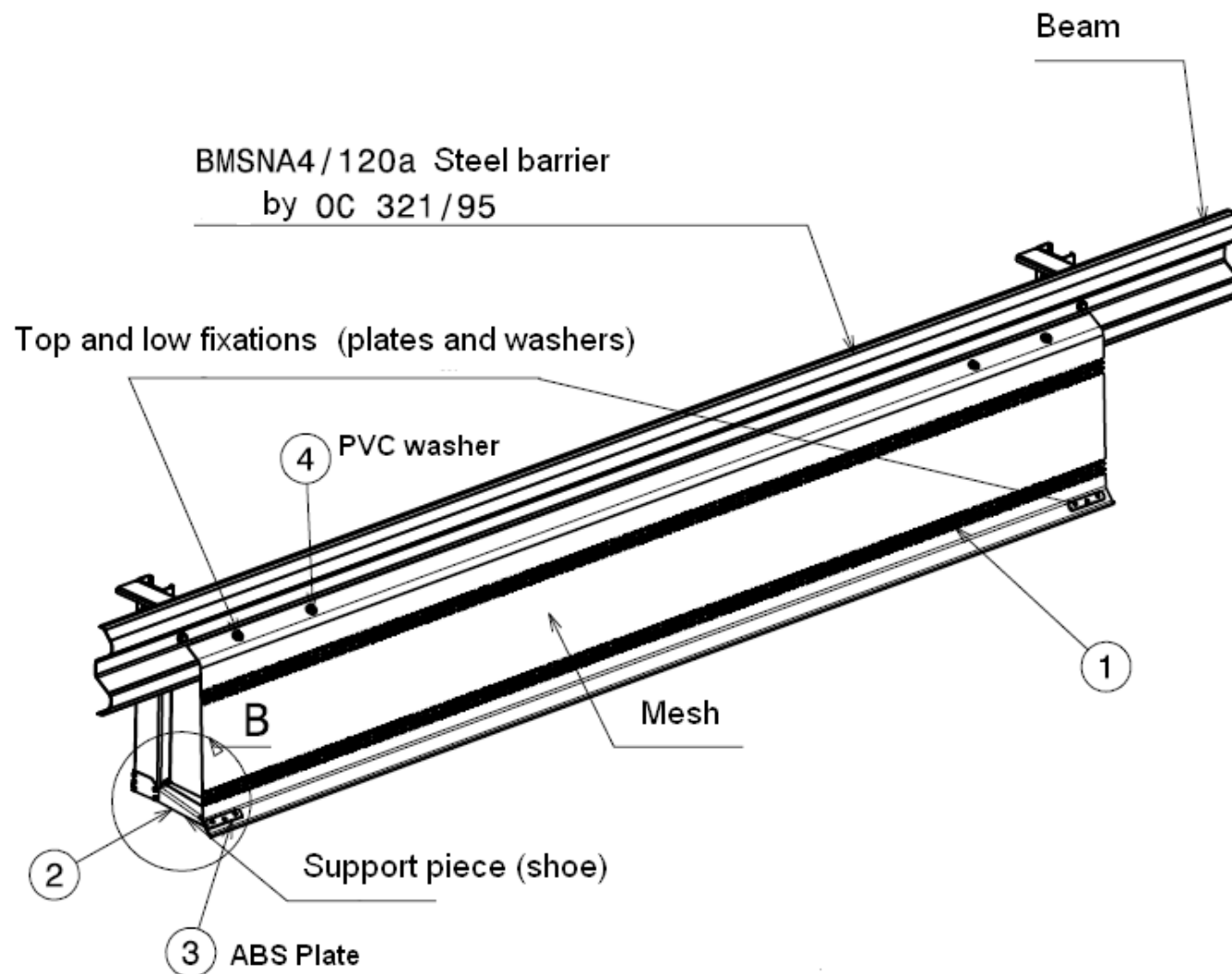
- **Maximum security level** (Certified with the highest safety level)
- **UV protection**, resistant to extreme temperatures (-20°C / +80°C)
- **Environment-friendly**: 100% recyclable. It is possible to customize it with colours or logos.
- **Certified** according to UNE 135900 and EN 1317
 - Heavy vehicle: TB32 under EN 1317: 1998
 - Small vehicle: TB11 under EN 1317: 1998
 - Dummy against post: TM 1.60 under UNE 135900
 - Dummy against space: TM 3.60 under UNE 135900



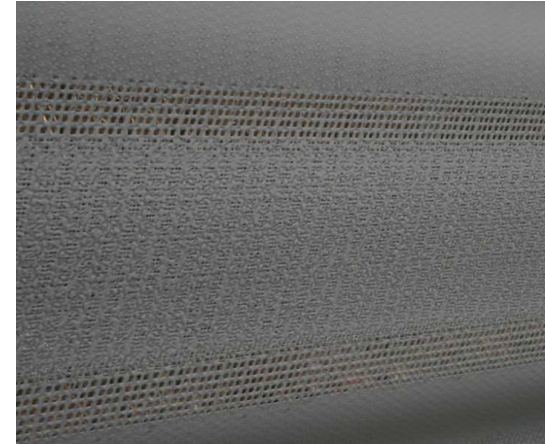
➤ **The Basyc MPS consist of:**

- Basyc geotextile mesh
- Shoe support piece
- Low fixing plate
- Top fixing washers
- Start-end plate





- **Basyc mesh:** Textile material composed of different thread densities, that confers excellent mechanical properties of resistance, stretching, traction
- **Easy** transport
- Height 780 mm , weight 1300 g/ml
- The textile is **made of**:
 - Polythene (PET).
 - Polyester
 - Teflon
 - Paraffin
 - PVC coating

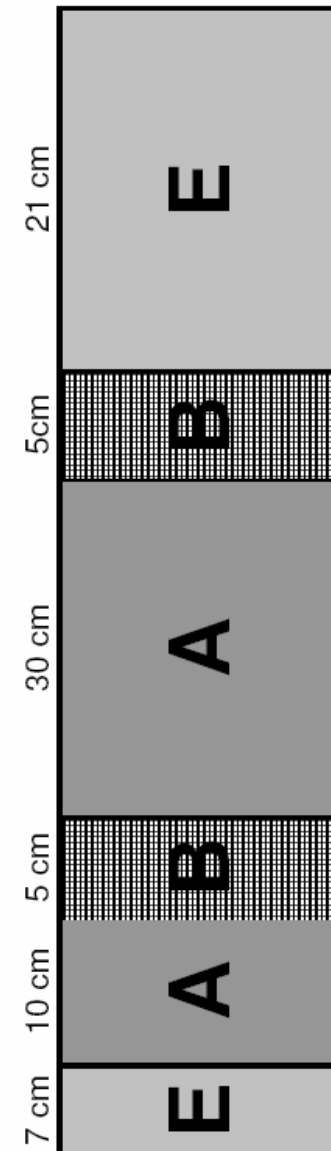


Basyc mesh

- The mesh is divided in three sections for an **optimum impact absorption** :

- A (moderate strain)
- B (high strain)
- E (low strain)

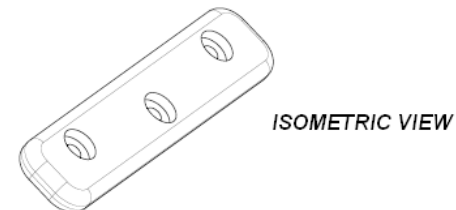
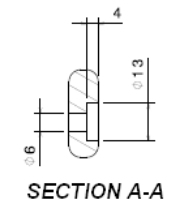
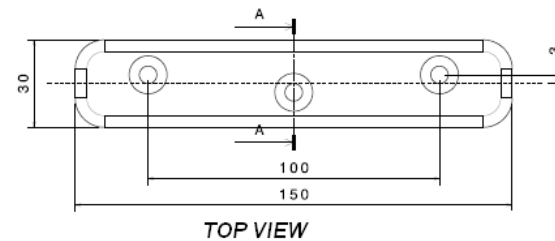
The 3 different strain zones



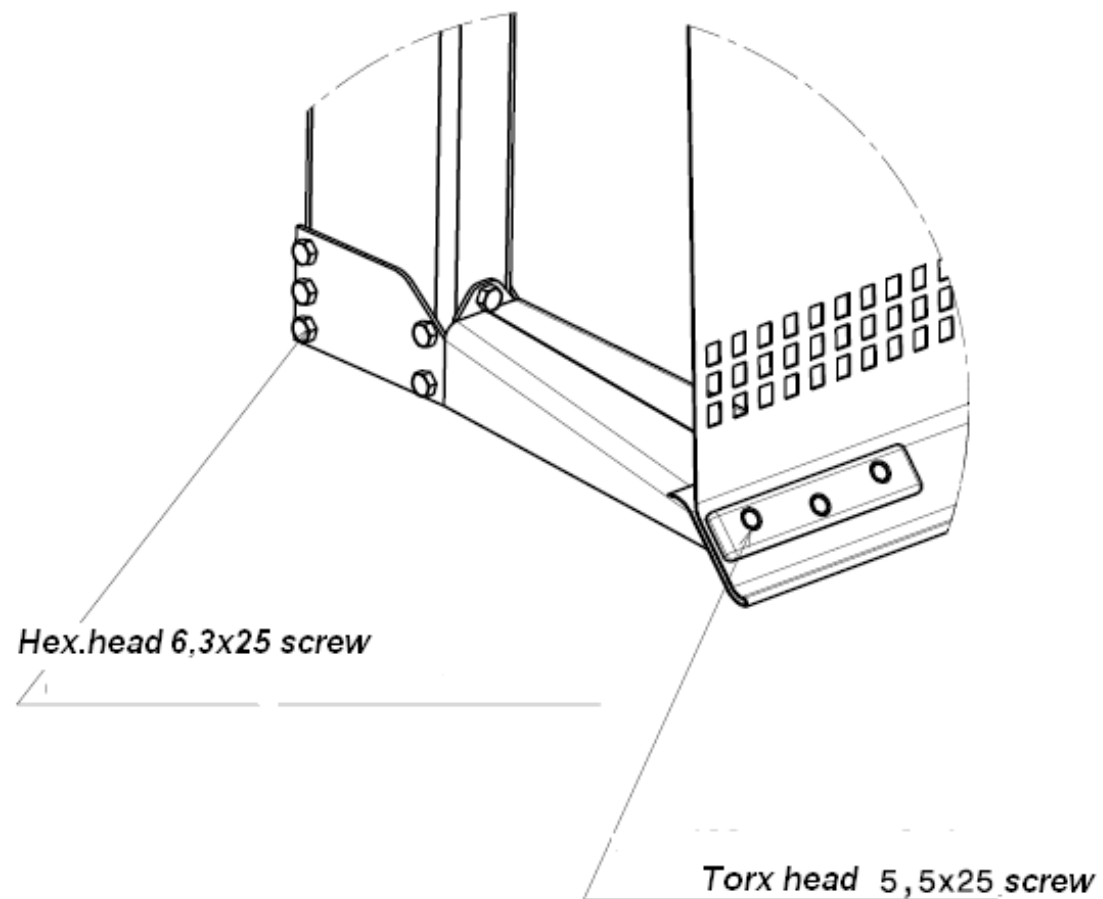
- **Shoe support.** It is a galvanize metal piece 3 mm thick. It fixes to the posts by means of 11 hexagonal screws



- **Lower fixing plate** . Is a ABS material piece, 10 mm thick. It's fixed to the post and mesh with 3 torx head screws



Lower fixing plate



Assembly detail

➤ **Top fixing washers**

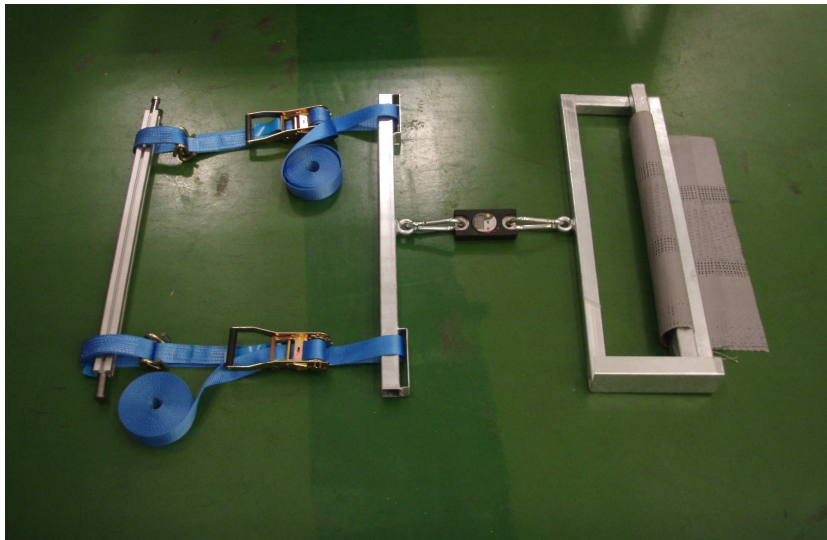
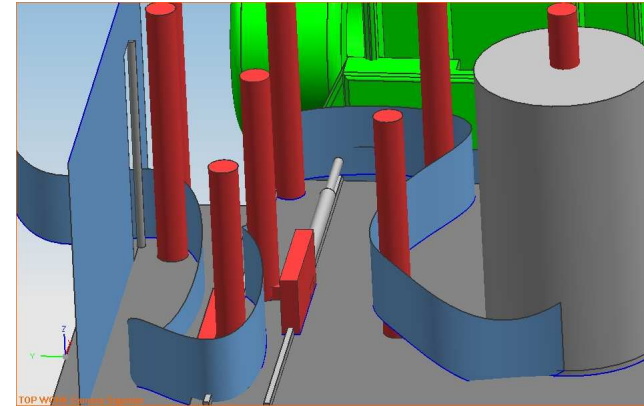
PVC pieces (4 by post) with a metal washer inside, screw down to the beam with Torx head screws



- **Start-end plate.** Is a metal piece 450 mm long, with 4 holes for Torx head screws



- **Very easy installation:**



Manual tool



Professional tool (PORTOR)