

## Advice for cyclists

- Ride where motorcycles, buses and taxis can see you – about 1 metre out from the left hand side of the road
- Unless traffic is stationary **don't ride on the thick white bus lane line** in between the bus lane and the other lane of traffic – you are at risk as other drivers won't know where you are intending to go
- If you need to turn right towards the end of the bus lane, stay in the left hand side position until 50 to 100 metres before you need to turn. Then look for a gap in the traffic signal right and take up a position in the right of the bus lane – **again don't ride on the thick white line**
- **Do not pass a stopped bus on its left**, passengers may be getting off
- **Never overtake** a moving vehicle on its left side within the same traffic lane
- If you are behind a bus at a junction **never edge forward** alongside it
- It can help to ease off pedalling when being overtaken by a bus.



## Advice for bus and taxi drivers

- Buses should normally overtake a cyclist by straddling the lane line
- When pulling out take extra care to look out for motorcycles and cyclists – they are not as visible as cars
- When pulling off after stopping in queued traffic check both sides to make sure there are no cyclists or motorcyclists filtering past
- Don't overtake cyclists if you are within about 100 meters or your next bus stop
- Look in your left hand mirror for cyclists when turning left
- Be especially careful at roundabouts as slow moving vehicles such as cycles, milk floats etc may stay in the left hand lane and signal right if they intend to continue round the roundabout. Allow them to do so.



# Make sure you ride in bus lanes with caution...

## How to be aware of the needs of bus lane users



## Website links:

- [www.plymouth.gov.uk/motorcycles](http://www.plymouth.gov.uk/motorcycles)
- [www.devon.gov.uk/index/transport/roads/road\\_safety/biker\\_safety.htm](http://www.devon.gov.uk/index/transport/roads/road_safety/biker_safety.htm)
- [www.thinkroadsafety.gov.uk/campaigns/motorcycles/motorcycles.htm](http://www.thinkroadsafety.gov.uk/campaigns/motorcycles/motorcycles.htm)



Road Safety Team  
Plymouth City Council  
Civic Centre  
Plymouth  
PL1 2AA

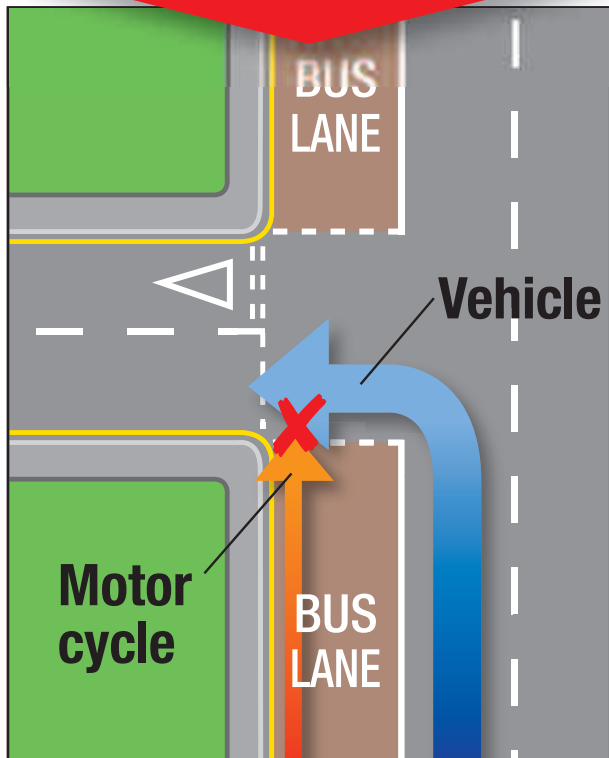


Tel 01752 307730

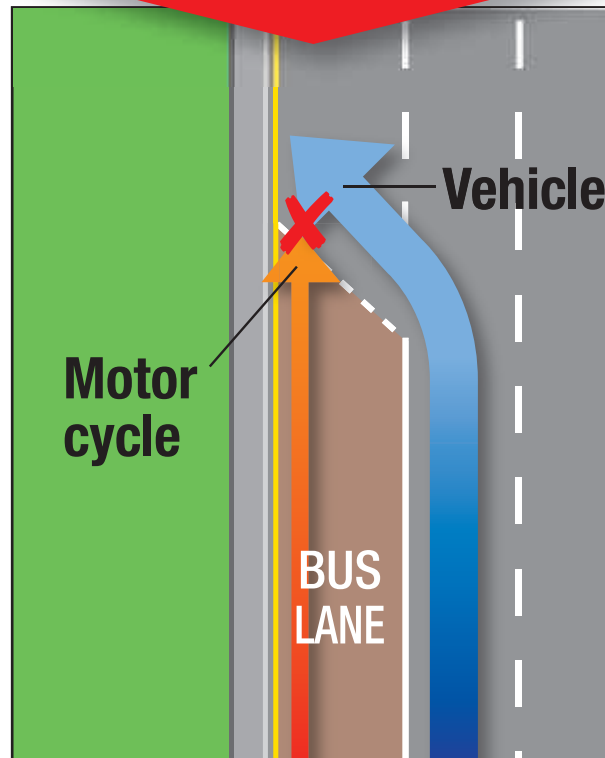
Email [roadsafety@plymouth.gov.uk](mailto:roadsafety@plymouth.gov.uk)  
[www.plymouth.gov.uk](http://www.plymouth.gov.uk)



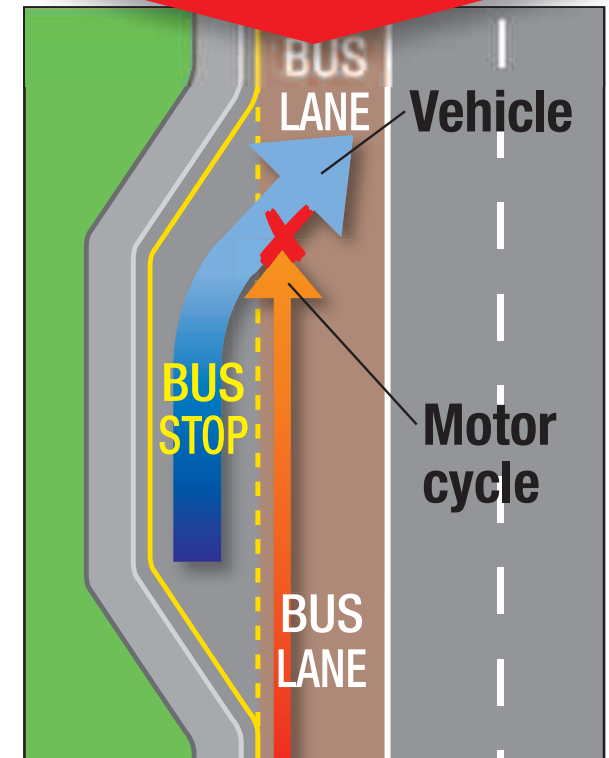
## Watch out at side road accesses



## Watch out at the end of the bus lane



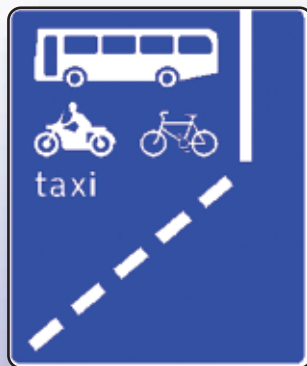
## Watch out at bus stops



## Motorcycles using bus lanes in Plymouth

Motorcyclists in the city are now able to use bus lanes for their journey when they include the motorcycle symbol like this one.

If this sign is not displayed at the entry to the lane it is an offence for any motorcyclist to use it.



## Advice for motorcyclists

- Enter and exit the bus lane smoothly and **signal** so drivers can predict your intentions
- Give yourself plenty of room when passing buses stopped in the bus lane
- Do not weave in and out of the bus lane as it is dangerous and drivers may not see or expect you
- Look out for drivers pulling into the bus lane from the offside to turn into side roads and accesses at the end of the bus lane
- **Let buses pull out** whenever you can and watch out for people leaving the bus and crossing the road

- Show consideration to other users and **give other motorcyclists and cyclists at least as much room as you would a car when overtaking**
- Watch out for pedestrians at pedestrian crossings, **you must not overtake the nearest vehicle at a pedestrian crossing**
- Motorcyclists should not abuse clear bus lanes by speeding down them. You should **keep below the speed limits and ride at an appropriate speed according to road, traffic and weather conditions.**