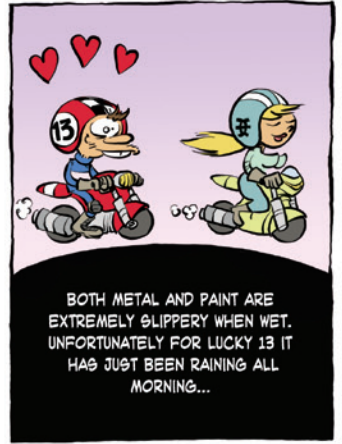
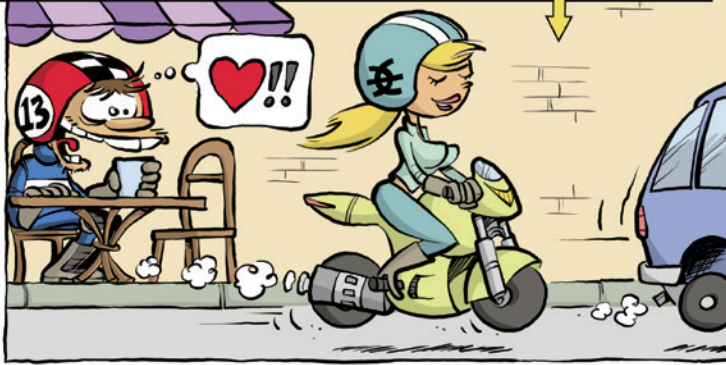


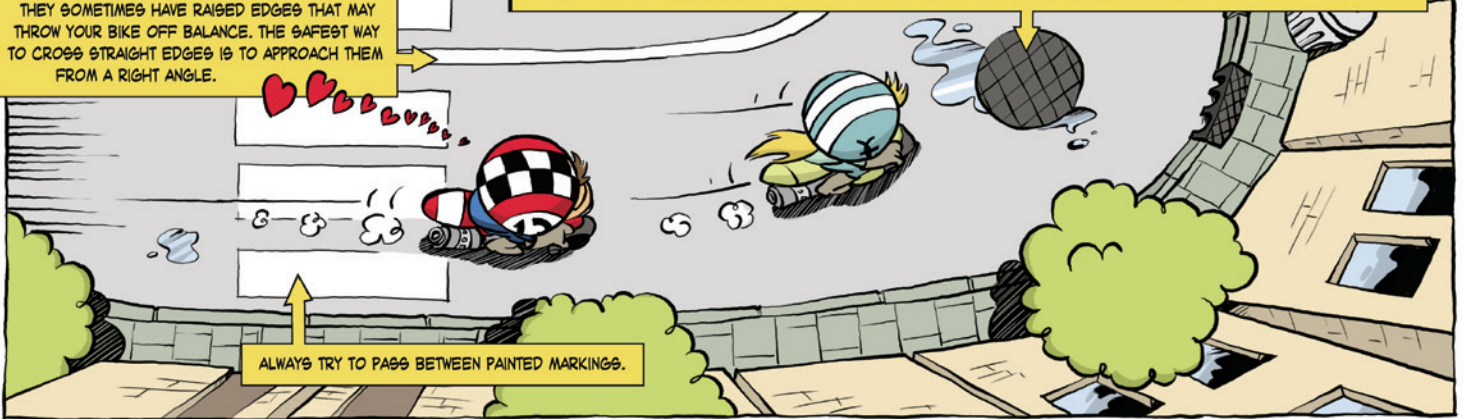


THE SUDDEN CHANGE OF GRIP WHEN RIDING ON METAL OR ON A PAINTED SURFACE CAN BE TREACHEROUS. KEEPING YOUR DISTANCE FROM PRECEDING VEHICLES WILL ALLOW YOU TO SPOT THIS KIND OF HAZARDS BEFOREHAND.



WATCH OUT FOR CONTINUOUS WHITE LINES SINCE THEY SOMETIMES HAVE RAISED EDGES THAT MAY THROW YOUR BIKE OFF BALANCE. THE SAFEST WAY TO CROSS STRAIGHT EDGES IS TO APPROACH THEM FROM A RIGHT ANGLE.

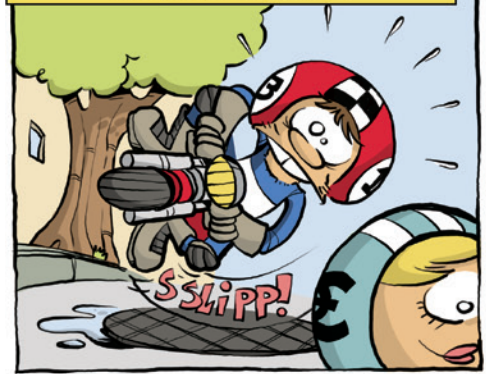
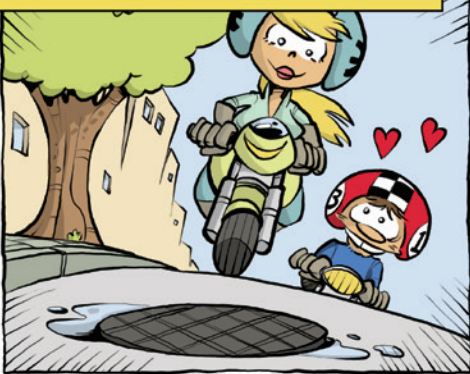
WATCH OUT FOR ACCESS COVERS ON BENDS - PIPES ARE USUALLY LAID IN STRAIGHT SECTIONS WITH ACCESS AT THE JOINTS



WHEN NEW, ACCESS COVERS ARE OFTEN TREATED WITH AN ANTI-SKID TEXTURE, BUT IT CAN QUICKLY WEAR OFF, LEAVING POLISHED METAL...

SO, SLOW DOWN ON APPROACHING AND CROSS THE COVER AS UPRIGHT AS POSSIBLE...

A WET METAL SURFACE OFFERS ABOUT AS MUCH GRIP AS ICE. THIS IS WHY YOU SHOULD NEVER LEAN INTO THE BEND WHILE CROSSING ONE, LUCKY 13...



JUST FOLLOW THESE SIMPLE TIPS AND EVEN METAL RAILS AND TRAM TRACKS WILL BECOME A PIECE OF CAKE...

AND IT JUST MIGHT TURN OUT TO BE A LUCKY DAY AFTER ALL...

